



## ROYAL NORFOLK SHOW 2017

28 & 29 June 2017

The Norfolk Show will soon be upon us and due to the sheer volume of people visiting the Show, it is inevitable that the local road network will be affected. We take traffic management very seriously and have plans in place to minimise the impact on the local community as much as possible.

The roads will be extremely busy at the key times of: **07:00 – midday**  
**15:00 – 19:30**

If possible, we recommend you avoid travelling at these times, although we realise this not always practical.

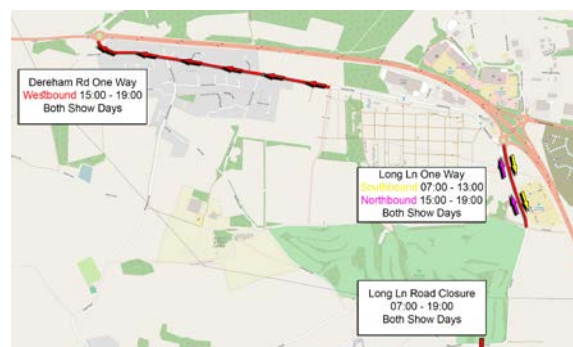
**Bawburgh to Marlingford:** weight restrictions for lorries will be in operation, but traffic flow will continue as usual.

**Bawburgh Bridge:** traffic will be managed by a 'Stop-Go' board, 07:00 – midday.

**Easton Village:** there will be a one-way restriction westbound on Dereham Rd (old A47) from just west of its junction with Forest Way between 15:00-19:00. Please access Easton Village via the Longwater roundabout during this time.

**Costessey Park & Ride:** this will be closed during the Show. Both lanes on Long Lane will have a one-way system in operation into the showground between 07:00-13:00 and away from the showground between 15:00-19:00.

The Park & Ride car park will be used as overflow parking for the Show.



We would like to thank you in advance for your patience over these two busy days and trust the Show does not cause you too much inconvenience. If you plan to visit the Royal Norfolk Show, we hope you enjoy a wonderful day out.

On the day traffic management hotline: 07736 184 365

**After the Show,** we would welcome any constructive comments on how you felt the management of traffic worked – please contact Mark Nicholas, Show Director: Royal Norfolk Show, Dereham Road, Norwich NR5 0TT email: [mark.nicholas@rnaa.org.uk](mailto:mark.nicholas@rnaa.org.uk)