



## THE ROYAL NORFOLK SHOW

**27<sup>th</sup> and 28<sup>th</sup> June 2018**

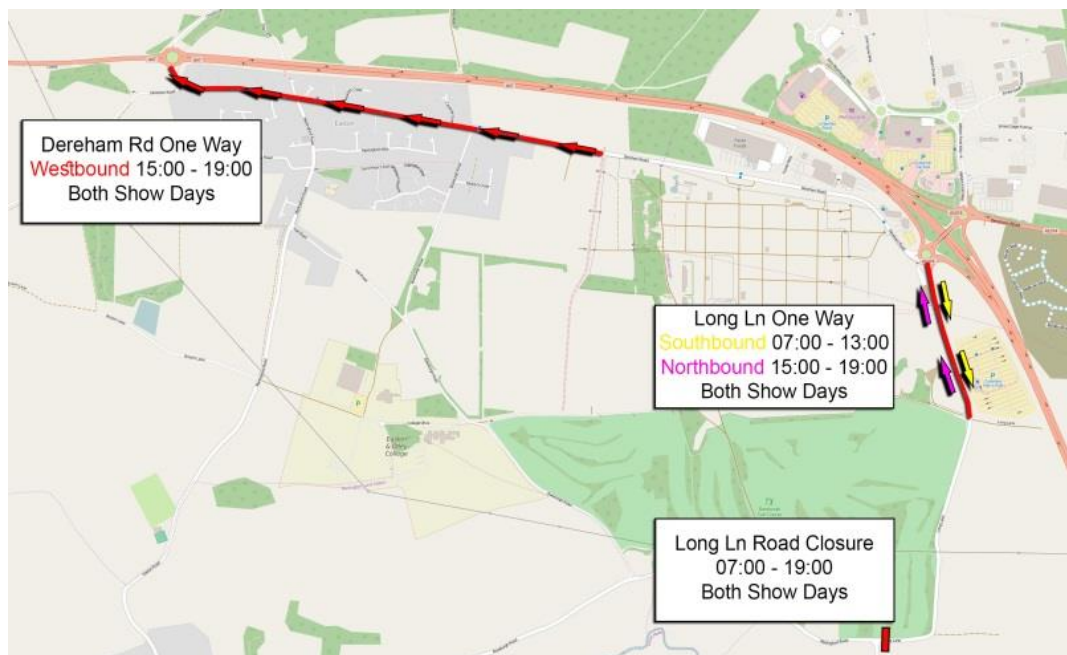
The Norfolk Show will soon be upon us and due to the sheer volume of people visiting the Show, it is inevitable that the local road network will be affected. We take traffic management very seriously and have plans in place to minimise the impact on the local community as much as possible.

The roads will be extremely busy at key times: **07:00 – midday and 15:00 – 19:30**

If possible, we recommend you avoid travelling at these times, although we realise this not always practical.

### **Traffic Control arrangements on 27<sup>th</sup> and 28<sup>th</sup> June 2018**

- **Bawburgh to Marlingford:** weight restrictions for lorries will be in operation, but traffic flow will continue as usual.
- **Bawburgh Bridge:** traffic will be managed by a 'Stop-Go' board, 07:00 – midday.
- **Easton Village:** there will be a one-way restriction westbound on Dereham Rd (old A47) from just west of its junction with Forest Way between 15:00-19:00. Please access Easton Village via the Longwater roundabout during this time.
- **Costessey Park & Ride:** this will be closed on 27<sup>th</sup> and 28<sup>th</sup> June and used as overflow parking. Both lanes on Long Lane will have a one-way system in operation into the showground between 07:00-13:00 and away from the showground between 14:00-19:00.



We would like to thank you in advance for your patience over these two busy days and trust the Show does not cause you too much inconvenience. If you plan to visit the Royal Norfolk Show, we hope you enjoy a wonderful day out.

On the day traffic management hotline: 07482 326215

**After the Show**, we would welcome any constructive comments on how you felt the management of traffic worked – please contact Mark Nicholas, Show Director, Norfolk Showground, Dereham Road, NR5 0TT  
email: [mark.nicholas@rnaa.org.uk](mailto:mark.nicholas@rnaa.org.uk)